

SAVE 30% OF ENERGY



日晷機械工業有限公司

JIH HUANG MACHINERY INDUSTRIAL CO., LTD

No. 42 Ming Dong Road, Yung Kang, Tainan, Taiwan R.O.C

TEL:886-6-2533648-9 FAX:886-6-2425890

E-mail:sales@jihhuang.com <http://www.jihhuang.com>

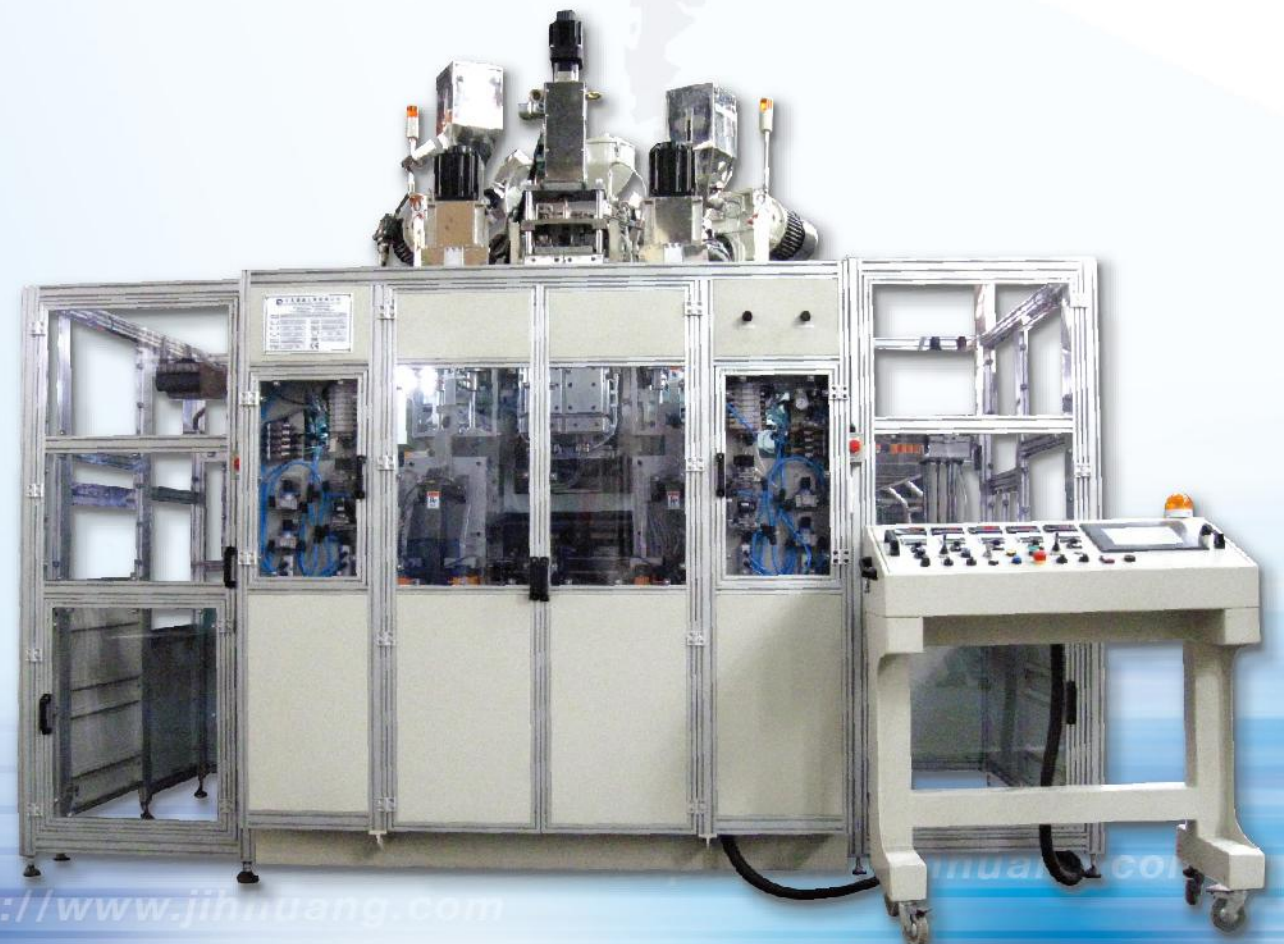


**JIH HUANG**  
<http://www.jihhuang.com>

*All Electric Driven*

*Multi layer*

*Blow molding machine*



<http://www.jihhuang.com>

<http://www.jihhuang.com>



## EXTRUDER

Screw Diameter	mm	30	40	50	60	75
Screw length	L/D	26	26	26	26	26
Maximum output in HDPE	Kg/Hr	6	11	36	58	120
Driven Motor	Kw	7.5	11	19	30	45
Heating zone	n°	3	3	4	4	4
Heating power (approximate)	Kw	5	4.6	5.3	11.2	13.5

## CLAMPING UNIT ( Single, Double station)

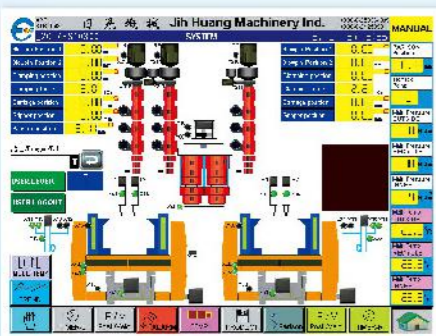
Clamping force	Ton	4	8	15	20
Maximum daylight opening	mm	315	400	590	640
Minimum daylight opening	mm	165	125	200	240
Maximum closing speed (Max)	mm/sec	600	500	420	420
Platen dimensions (W*H)	mm	270x270	300x380	400x480	460x520
Horizontal stroke max	mm	380	420	480	560
Dry cycle	sec	1.8	2.0	2.4	3.5
Pneumatic Air	Kg/cm²	8.0	8.0	8.0	8.0

## OTHER SPECIFICATION:

Die Head	Type	Mono and multi layer (up to seven layers) countinue type. 1 up to 4 parisons suitable for all common thermoplastic materials.
	Parison programmer	In built parison programmer with 100 points wall thickness profiles
	Optional	View strip extrusion heads and retrofits for all head sizes and models. Photo electric eye.
Clamping unit	Type	Toggle mechanism (Patented) , single or double station.
	Precision	The AC servo motor make possible to synchronize the opening, closing clamp movement and blow pin up and down repeatability at 0.01 mm position in every cycle.
Extruder	Capatibility	Plastiizing capacity independent of back pressure due to grooved, water cooled feed section.
	Drive motor	Extruder screw revolution control from inverter.
	Melt pressure sensor	Melt pressure sensor is installed to all series of machine.
Control unit	Interface	10.4 inch touch control color monitor.
	Operation information	Real-time current operating informations display on screen.
	Data storage	60 sets mold data storage bank.
	Heating zone temperature	PID digital controllers for each barrel heating zone.
	Alarm / Alarm history	Failure alarm display and detailed remedial suggestions for trouble shooting.
	Precision position	Digitize set position to 0.01mm guidance by two linear guide rails.
	Pass word	Pass word protected level Management.
Mold set	Set-up mode to protect machine motions with open safety gate.	

## OTHER OPTIONAL ACCESSORIES:

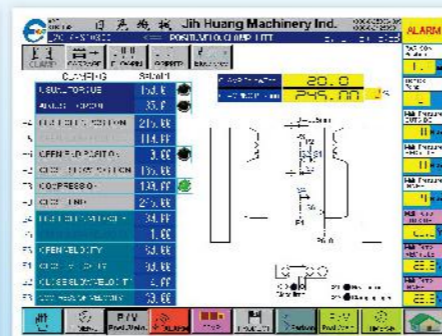
Deflash	Holding mold and deflash mask.
Gripper	Oriented product discharge gripper.
Other auxiliary accessories	One up to four station post cooling. Leak tester. Calibrated neck finish. In-mold labeling.



Parison operating page



System page



Screw barrel temperature page

## EBMC Series

New

## All Electric Driven Blow Molding Machine

### Machine EBMC Series

The all electric driven blow Molding Machine EBMC Series reflects the aggressive stance of enterprises towards the recent environmental problems. The energy savings and clean properties of the equipment itself have come to be strongly demanded in the plastic molding and processing industries. On the other hand, there has long been a need, plus stronger demand for a more accurate, highly efficient and high quality blow molding machine, which will cut production costs. Electric-powered blow molding machine development is currently proceeding at an extremely rapid speed. The JIH HUANG machinery Industries has also launched the medium-sized all electric blow molding machines "EBMC Series" into the market.

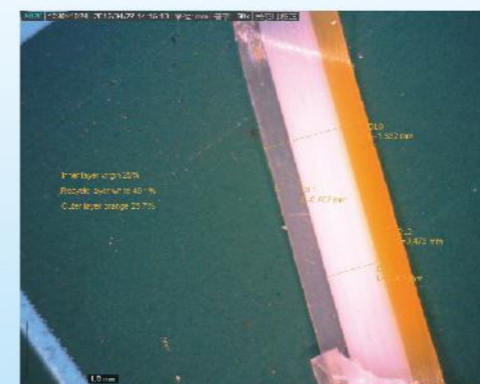
The EBMC Series concept is "High speed and power performance blow molding machines which are gentle to the environment". This series is in addition to the conventional hydraulic blow molding machines. The features of the "EBMC Series" are introduced below. The appearance of the machine is given in

1. High-reliability and high-speed toggle mechanism  
The clamping device adopts a two-point toggle mechanism (the JIH HUANG's patent) to pursue optimum toggle pin arrangement through motion analysis simulation.
2. The electro-mechanical drive technology is leak-proof and clean, as there is no need for the maintenance cost of hydraulic fluid and cooling water used on the oil cooler.
3. Low energy consumption (Energy saving) The all-electric blow molding machine drives only the motor shaft required for each blow molding process, and thus directly exchanges energy, ensuring drastic reduction in energy consumption. No electric consume on all servo motors while mold is close. related to the machine movements only, energy consumption is reduce by around 30% in comparison to a conventional hydraulic machine.
4. Low noise level, without continues hydraulic pump running noise the production environment is much quiet.

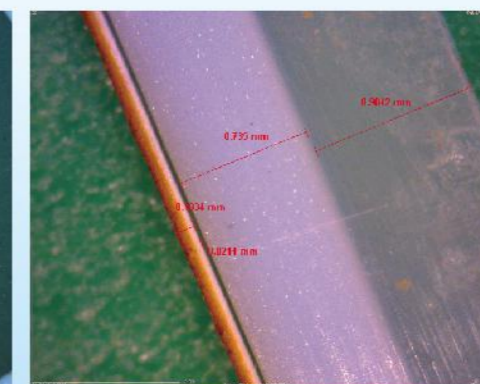
## MULTI-LAYER APPLICATION

Contain product	N° of layer	Inner layer → outer layer						Application
		1	2	3	4	5	6	
Mayonnaise	6	LDPE	REG	AD	EVOH	AD	LDPE	Anti-Oxidation, Recycle
Food, soft drink	6	PP	AD	EVOH	AD	REG	PP	Anti-Oxidation, Odor prevention
Fuel	6	HDPE	AD	EVOH	AD	REG	HDPE	Perspire prevention
Fragrance	5	PP	REG	AD	EVOH	PP	-	Odor permeance prevention
Agrochemicals	4	EVOH	AD	REG	HDPE	-	-	Anti-chemical, Recycle
Sunscreen	4	HDPE	REG	AD	EVOH	-	-	Gloss, Recycle, Anti-oxidation
Food w/lemon juice	4	EVOH	AD	REG	HDPE	-	-	Anti-absorption, Recycle
Cosmetics, Mascara	3	HDPE	AD	EVOH	-	-	-	Anti-Oxidation, Gloss, Printability
Cosmetics	3	EVOH	AD	PP	-	-	-	Anti-Oxidation,
Shampoo	3	HDPE	REG	HDPE	-	-	-	Gloss, Recycle, Pigment saving
Chemical	2	HDPE	HDPE (color)	-	-	-	-	Light blocking, Anti-extraction

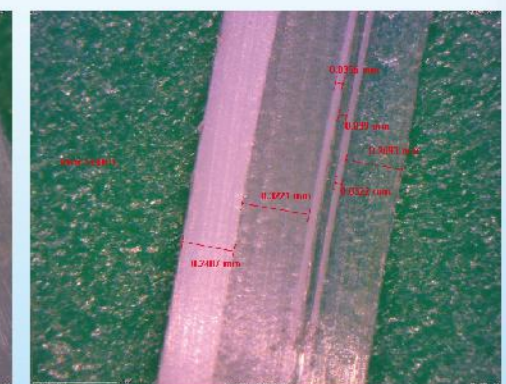
REG : Recycle layer  
AD : Adhesion layer  
EVOH : Barrier layer PP, HDPE resin can be inversed depend on product content.



3 Layer



4 Layer



6 Layer